

#MacroSW Transcript

Healthcare social media transcript of the #MacroSW hashtag.

Thu, October 3rd 2019, 8:45PM – Thu, October 3rd 2019, 10:15PM (America/New_York).

See #MacroSW Influencers/Analytics.



Nancy Kusmaul, PhD, MSW @nancy_kusmaul

an hour ago

RT @AlyssaLotmore: In 1 hour I'll be hosting the #MacroSW chat with guest expert, @llpyles. We'll be talking disasters, climate change & so...



Nancy Kusmaul, PhD, MSW @nancy_kusmaul

an hour ago

RT @SocialWorkItOut: #MacroSW 🙌❤️😭❤️😊🙌 <https://t.co/BeY1mv3lfw>



Jonathan Singer @socworkpodcast

an hour ago

Episode 121: The Special Commission on Macro Practice: Interview with Dr. Darlyne Bailey and Dr. Terry Mizrahi <https://t.co/oQLjxHyIYB> #macrosw #socialwork



Dr. Tom Felke @SocWrkDoc

an hour ago

Getting ready for tonight's #MacroSW Twitter chat on Disasters, Climate Change, & Social Work so please excuse the extra tweets over the next hour. Thanks!



Nancy Kusmaul, PhD, MSW @nancy_kusmaul

an hour ago

RT @SocWrkDoc: Getting ready for tonight's #MacroSW Twitter chat on Disasters, Climate Change, & Social Work so please excuse the extra twe...



Kayla Blotner @KayBlot

an hour ago

Hi I'm Kayla a student from SUNY Oneonta and I'm back for another #macrosw chat



Alyssa Lotmore @AlyssaLotmore

an hour ago



Hi #MacroSW chatters! I'm Alyssa Lotmore, LMSW, & I'll be hosting tonight's chat. I work @UAlbanySSW & co-host @socialworkersfm, a show where students, alums & community professionals can come on air to share expertise, resources & start important dialogues on #socialwork topics.



Loretta Pyles @llpyles

an hour ago



@AlyssaLotmore @UAlbanySSW @socialworkersfm Looking forward to this timely and critical discussion, thanks Alyssa #MacroSW



Alyssa Lotmore @AlyssaLotmore

an hour ago



@UAlbanySSW @socialworkersfm I am thrilled to have guest expert, @llpyles of @UAlbanySSW, leading the chat tonight on disasters, climate change & social work. #MacroSW



ITTIC @UBittic

an hour ago



Hi everyone, Brittany here representing UB ITTIC. Looking forward to tonight's chat! #macrosw



Nancy Kusmaul, PhD, MSW @nancy_kusmaul

an hour ago



Hi #MacroSW! @nancy_kusmaul, asst prof @umbc, @mdsocialwork, long time chat participant. Excited for this chat. I've done some writing in the space of disasters and older adults, and trauma-informed approaches to disaster response.



Alyssa Lotmore @AlyssaLotmore

an hour ago



Let's do a few more minutes of introductions and we will start with question 1 in a few minutes. #MacroSW



Anna @anna_ambrussuny

an hour ago



Hello everyone! My name is Anna and I am a student at SUNY Oneonta! Enjoyed last week's chat and now I am looking forward to another learning experience in tonight's convo #MacroSW



Loretta Pyles @llpyles

an hour ago



I welcome you all to tonight's #MacroSW chat on the topic of climate change, disasters and social work. This is a topic that is near and dear to me and I am humbled to have the opportunity to be in conversation with interested folks.



#MacroSW Moderator @OfficialMacroSW

an hour ago



Rachel West @poliSW on the official account. #MacroSW



#MacroSW Moderator @OfficialMacroSW

an hour ago



@nancy_kusmaul @UMBC @mdsocialwork Welcome back. #MacroSW



#MacroSW Moderator @OfficialMacroSW

an hour ago



RT @AlyssaLotmore: Hi #MacroSW chatters! I'm Alyssa Lotmore, LMSW, & I'll be hosting tonight's chat. I work @UAlbanySSW & co-host @socialwo...



#MacroSW Moderator @OfficialMacroSW

an hour ago



@KayBlot Welcome to the chat. #macrosw



Nancy Kusmaul, PhD, MSW @nancy_kusmaul

an hour ago



RT @llpyles: I welcome you all to tonight's #MacroSW chat on the topic of climate change, disasters and social work. This is a topic that i...



Alyssa Lotmore @AlyssaLotmore

an hour ago



Q1: In what ways are disasters and climate change relevant to social workers?
#MacroSW <https://t.co/m3u5lCX4YV>



#MacroSW Moderator @OfficialMacroSW

an hour ago



RT @AlyssaLotmore: Q1: In what ways are disasters and climate change relevant to social workers? #MacroSW <https://t.co/m3u5lCX4YV>





Loretta Pyles @llpyles

an hour ago

@AlyssaLotmore A1: Climate change and disasters have implications around issues such as food insecurity, housing, migration within and between countries, and trauma. #MacroSW



Adrienne Garr @adriennecgarr

an hour ago

I'm Adrienne an LMSW in NY and an @UBSSW 2017 alum #GoBulls 🐮🐮🐮 #MacroSW



Nancy Kusmaul, PhD, MSW @nancy_kusmaul

an hour ago

RT @llpyles: @AlyssaLotmore A1: Climate change and disasters have implications around issues such as food insecurity, housing, migration wi...



ITTIC @UBittic

an hour ago

A1: Social workers at all levels of practice need to be able to recognize key signs of trauma in order to respond effectively during and after a disaster <https://t.co/ieAhtVZ4oX> #MacroSW



Kayla Blotner @KayBlot

an hour ago

@AlyssaLotmore A1: when disaster strikes there are a lot of people affected by it who need some form of help #MacroSW



Nancy Kusmaul, PhD, MSW @nancy_kusmaul

an hour ago

A2: Disasters and climate change impact everyone and contribute to many other social problems. Social workers respond to these problems in a variety of ways. #MacroSW



Destiny Cardoso @Destiny39985027

an hour ago

Hello, my name is Destiny and I am a CSULB student. #MacroSW



Loretta Pyles @llpyles

an hour ago



@AlyssaLotmore Anxiety about climate change & grief about the earth's devastation are some unexplored areas that communities may be facing. <https://t.co/8vet6ZQeyg> offers resources for working with grief, despair, & hopelessness on this in order to activate people to create change. #MacroSW



#MacroSW Moderator @OfficialMacroSW

an hour ago



@adriennecgarr @UBSSW Welcome back. #macrosw



Dr. Tom Felke @SocWrkDoc

an hour ago



Hi all! Tom Felke, Chair of the Department of Social Work at Florida Gulf Coast University and affiliate faculty of the Water School at FGCU! #MacroSW



#MacroSW Moderator @OfficialMacroSW

an hour ago



RT @llpyles: @AlyssaLotmore A1: Climate change and disasters have implications around issues such as food insecurity, housing, migration wi...



Nancy Kusmaul, PhD, MSW @nancy_kusmaul

an hour ago



*A1



#MacroSW Moderator @OfficialMacroSW

an hour ago



@SocWrkDoc Welcome #macrosw



Vilissa Thompson @VilissaThompson

an hour ago



Good evening, y'all! #MacroSW partner here, eager to see the discussion of tonight's chat. I hope everyone is settling into October well, and if you observe, diving into spooky season with full force.



Loretta Pyles @llpyles

an hour ago



@AlyssaLotmore Facilitating environmental justice is a core value and mandate for social workers. The impact that climate change is having on disaster vulnerability is an ethical environmental justice mandate. <https://t.co/wVTyVv0G9n> #MacroSW





Vilissa Thompson @VilissaThompson

an hour ago

RT @AlyssaLotmore: Q1: In what ways are disasters and climate change relevant to social workers? #MacroSW <https://t.co/m3u5ICX4YV>



Dr. Tom Felke @SocWrkDoc

an hour ago

A1) Social workers are often called upon in the aftermath of disasters but can play a crucial role in the planning stages prior to their arrival when time permits. I served on the CT Governor's Emergency Response Team at one point. #MacroSW



#MacroSW Moderator @OfficialMacroSW

an hour ago

RT @llpyles: @AlyssaLotmore Anxiety about climate change & grief about the earth's devastation are some unexplored areas that communities m...



Adrienne Garr 👑 @adrienne Garr

an hour ago

@VilissaThompson I always like when you stop by #MacroSW 😊😊



Nancy Kusmaul, PhD, MSW @nancy_kusmaul

an hour ago

RT @llpyles: @AlyssaLotmore Facilitating environmental justice is a core value and mandate for social workers. The impact that climate chan...



Nancy Kusmaul, PhD, MSW @nancy_kusmaul

an hour ago

RT @VilissaThompson: Good evening, y'all! #MacroSW partner here, eager to see the discussion of tonight's chat. I hope everyone is sett...



#MacroSW Moderator @OfficialMacroSW

an hour ago

@Destiny39985027 Welcome #macrosw



Nancy Kusmaul, PhD, MSW @nancy_kusmaul

an hour ago

RT @llpyles: @AlyssaLotmore Anxiety about climate change & grief about the earth's devastation are some unexplored areas that communities m...



Oscar Rivera @OscarLCSW

an hour ago

#macrosw





Victor Asal @Victor_Asal

an hour ago

RT @AlyssaLotmore: Q1: In what ways are disasters and climate change relevant to social workers? #MacroSW <https://t.co/m3u5ICX4YV>



Anna @anna_ambrussuny

an hour ago

RT @llpyles: @AlyssaLotmore Anxiety about climate change & grief about the earth's devastation are some unexplored areas that communities m...



Nancy Kusmaul, PhD, MSW @nancy_kusmaul

an hour ago

A1: #macrosw We talked about risks to older adults and social work roles in: Gerontological Social Work Roles in Disaster Preparedness and Response <https://t.co/ENvDT3CCbb>



#MacroSW Moderator @OfficialMacroSW

an hour ago

RT @llpyles: @AlyssaLotmore Facilitating environmental justice is a core value and mandate for social workers. The impact that climate chan...



Adrienne Garr @adriennecgarr

an hour ago

A1. I also think SWs are under utilized when it comes to partnering with urban planners. We understand how behavior and environment are linked- we should be integrated in any disaster relief/emergency management efforts #MacroSW



Nancy Kusmaul, PhD, MSW @nancy_kusmaul

an hour ago

RT @adriennecgarr: A1. I also think SWs are under utilized when it comes to partnering with urban planners. We understand how behavior and...



Adrienne Garr @adriennecgarr

an hour ago

@SocWrkDoc That's wonderful! We need to be in those spaces more often #MacroSW



Destiny Cardoso @Destiny39985027

an hour ago

@AlyssaLotmore A1: Climate changes contribute to environmental disasters. Natural disasters displace people from their homes, impact economy, and destroy communities where a social worker is needed to help provide shelter and other needed resources. #MacroSW



Alyssa Lotmore @AlyssaLotmore

an hour ago

Up next... Q2: Who are the people that are most vulnerable in disasters?
#MacroSW <https://t.co/vkTDjILeC9>



Loretta Pyles @llpyles

an hour ago

@adriennecgarr It's a great point. Would love to hear your thoughts about why you think we are under-utilized. #MacroSW



Dr. Beth Walker @bwalker123

an hour ago

RT @adriennecgarr: A1. I also think SWs are under utilized when it comes to partnering with urban planners. We understand how behavior and...



#MacroSW Moderator @OfficialMacroSW

an hour ago

RT @AlyssaLotmore: Up next... Q2: Who are the people that are most vulnerable in disasters? #MacroSW <https://t.co/vkTDjILeC9>



Nancy Kusmaul, PhD, MSW @nancy_kusmaul

an hour ago

@AlyssaLotmore A2: Those most vulnerable before disasters are most vulnerable in disasters- homeless, homebound, those with limited mobility, those who are socially isolated...#macrosw



ITTIC @UBittic

an hour ago

A2: The trauma-informed principles of safety and empowerment are critical in disaster times. A sense of empowerment and some level of safety are key in reducing vulnerability to the impacts of disaster within all populations
<https://t.co/XVHKP0s0Le> #MacroSW



Loretta Pyles @llpyles

an hour ago

@Destiny39985027 @AlyssaLotmore Yes, good point re: economy. It effects things in the immediate local economy, but even globally, like the impacts that a drought in one region can have on people across the globe. #macrosw



Dorlisa Minnick @DorlisaMinnick

an hour ago

RT @llpyles: @AlyssaLotmore Facilitating environmental justice is a core value and mandate for social workers. The impact that climate chan...



Loretta Pyles @llpyles

an hour ago

@AlyssaLotmore Low-income people are the most vulnerable to disasters because they do not have resources to prepare, mitigate, evacuate or recover once the disaster hits. The CDC offers guidelines for identifying at-risk groups.
<https://t.co/nJfYltZhc> #MacroSW



ITTIC @UBittic

an hour ago

A2: Also, the negative effects of Adverse Childhood Experiences (ACEs) are significant. Children have a particular vulnerability in disasters and can face long-lasting impacts <https://t.co/a7XcwwdKi1> #MacroSW



Dorlisa Minnick @DorlisaMinnick

an hour ago

RT @llpyles: @AlyssaLotmore Anxiety about climate change & grief about the earth's devastation are some unexplored areas that communities m...



Dorlisa Minnick @DorlisaMinnick

an hour ago

RT @adriennegarr: A1. I also think SWs are under utilized when it comes to partnering with urban planners. We understand how behavior and...



Loretta Pyles @llpyles

an hour ago

@AlyssaLotmore People who live in: low-lying areas are vulnerable to flooding, housing that is physically unstable are vulnerable in earthquakes, and people living in coastal areas are vulnerable to hurricanes and tsunamis. #MacroSW



Adrienne Garr @adriennegarr

an hour ago

@llpyles Other professions do not understand the full scope of scope of SW. Like how in clinical settings SWs assess a clients home to see if they need supportive environmental adaptations. It's the same skill just on a larger scope from a SW lens. #MacroSW



Nancy Kusmaul, PhD, MSW @nancy_kusmaul

an hour ago

#macrosw



Destiny Cardoso @Destiny39985027

an hour ago

@AlyssaLotmore A2: Those most vulnerable in disasters are low-income communities, children, women, elderly, and developing countries. Nonetheless, the United States is also at huge risk for natural disasters. #MacroSW <https://t.co/uHYNBwOpsO> <https://t.co/pd81oUoZx6>



Nancy Kusmaul, PhD, MSW @nancy_kusmaul

an hour ago

RT @adriennegarr: @llpyles Other professions do not understand the full scope of scope of SW. Like how in clinical settings SWs assess a c...



Nancy Kusmaul, PhD, MSW @nancy_kusmaul

an hour ago

RT @llpyles: @AlyssaLotmore People who live in: low-lying areas are vulnerable to flooding, housing that is physically unstable are vulnera...



Vilissa Thompson @VilissaThompson

an hour ago

A2: A population that gets overlooked: disabled people. #MacroSW



Nancy Kusmaul, PhD, MSW @nancy_kusmaul

an hour ago

RT @Destiny39985027: @AlyssaLotmore A2: Those most vulnerable in disasters are low-income communities, children, women, elderly, and develo...



Loretta Pyles @llpyles

an hour ago

@AlyssaLotmore Older adults, people with disabilities and health challenges, children, and people with pets are vulnerable; anyone with mobility issues is going to be especially challenged during a disaster. #MacroSW



#MacroSW Moderator @OfficialMacroSW

an hour ago

RT @llpyles: @AlyssaLotmore Low-income people are the most vulnerable to disasters because they do not have resources to prepare, mitigate,...



Dorlisa Minnick @DorlisaMinnick

an hour ago

@llpyles @adriennecgarr I'm an affiliate scientist with @ShipCLUS where I conduct research with county planning and social work definitely needs to be at those tables because of our social justice and equity lens! #MacroSW



ITTIC @UBittic

an hour ago

A2: Finally, it's important to remember that first responders are also especially vulnerable to the impacts of both direct and vicarious trauma in times of disaster and must also be considered <https://t.co/lgvoSYGLhn> #MacroSW



#MacroSW Moderator @OfficialMacroSW

an hour ago

RT @llpyles: @AlyssaLotmore Older adults, people with disabilities and health challenges, children, and people with pets are vulnerable; an...



Nancy Kusmaul, PhD, MSW @nancy_kusmaul

an hour ago

#macrosw Must Reads: Poor, elderly and too frail to escape: Paradise fire killed the most vulnerable residents <https://t.co/Bbv72tU9Gk>



Nancy Kusmaul, PhD, MSW @nancy_kusmaul

an hour ago

RT @DorlisaMinnick: @llpyles @adriennecgarr I'm an affiliate scientist with @ShipCLUS where I conduct research with county planning and soc...



Adrienne Garr @adriennecgarr

an hour ago

@AlyssaLotmore A2. Usually folks living in poverty 😞 who don't live on high ground are at a higher risk because they don't have the resources to move or evacuate safely. Some people stay in a disaster situation because they have limited resources. #MacroSW



Anna @anna_ambrussuny

an hour ago

RT @Destiny39985027: @AlyssaLotmore A2: Those most vulnerable in disasters are low-income communities, children, women, elderly, and develo...



Nancy Kusmaul, PhD, MSW @nancy_kusmaul

an hour ago

#macrosw @VilissaThompson Many of the dead in Camp Fire were disabled, elderly. Could they have been saved? <https://t.co/1LOjEFD5zy>



Anna @anna_ambrussuny

an hour ago

RT @nancy_kusmaul: #macrosw Must Reads: Poor, elderly and too frail to escape: Paradise fire killed the most vulnerable residents <https://t...>



Adrienne Garr @adriennecgarr

an hour ago

@nancy_kusmaul Especially our elders 😞 they're usually the most vulnerable along with individuals who have disabilities living on a fixed income. #MacroSW



Nancy Kusmaul, PhD, MSW @nancy_kusmaul

an hour ago

RT @adriennecgarr: @nancy_kusmaul Especially our elders 😞 they're usually the most vulnerable along with individuals who have disabilities...



Dorlisa Minnick @DorlisaMinnick

an hour ago

RT @llpyles: @Destiny39985027 @AlyssaLotmore Yes, good point re: economy. It effects things in the immediate local economy, but even global...



Dorlisa Minnick @DorlisaMinnick

an hour ago

RT @UBittic: A2: The trauma-informed principles of safety and empowerment are critical in disaster times. A sense of empowerment and some l...



Dorlisa Minnick @DorlisaMinnick

an hour ago

RT @nancy_kusmaul: @AlyssaLotmore A2: Those most vulnerable before disasters are most vulnerable in disasters- homeless, homebound, those w...



Nancy Kusmaul, PhD, MSW @nancy_kusmaul

an hour ago

@adriennecgarr Older adults are often at risk because of #socialisolation. Neighbors, rescuers, etc may not realize they're still there when it comes to evacuations or that they may need help to evacuate. #macrosw



Alyssa Lotmore @AlyssaLotmore

an hour ago

@UBittic Very true! Just because you are a trained professional, coming in to help, it does not mean that you are immune to the effects of trauma exposure. We must not forget about first responders. #MacroSW



Nancy Kusmaul, PhD, MSW @nancy_kusmaul

an hour ago

Some areas have special needs registries to help identify these individuals. <https://t.co/AbcvDMuBgt> #MacroSW



Alyssa Lotmore @AlyssaLotmore

an hour ago

Q3: Who are the key actors in disaster recovery? #MacroSW <https://t.co/G7Hd0hQzb9>



Nancy Kusmaul, PhD, MSW @nancy_kusmaul

an hour ago

RT @AlyssaLotmore: @UBittic Very true! Just because you are a trained professional, coming in to help, it does not mean that you are immune...



Dorlisa Minnick @DorlisaMinnick

an hour ago

RT @AlyssaLotmore: @UBittic Very true! Just because you are a trained professional, coming in to help, it does not mean that you are immune...



#MacroSW Moderator @OfficialMacroSW

an hour ago

RT @AlyssaLotmore: Q3: Who are the key actors in disaster recovery? #MacroSW <https://t.co/G7Hd0hQzb9>



ITTIC @UBittic

44 minutes ago

A3: This community worked collaboratively in a trauma-informed way to respond to a disaster, mitigate its impacts, and to showcase the community's strength and resilience <https://t.co/U2cDFbvJ0k> #MacroSW



Adrienne Garr @adrienne Garr

44 minutes ago

@AlyssaLotmore @UBittic Policies should be created so that 1st responders have a safe space to process the trauma they are exposed to. #MacroSW



Loretta Pyles @llpyles

44 minutes ago

@DorlisaMinnick @adrienne Garr @ShipCLUS We should be on the front lines of many sustainability issues. However, our meager resources are tied up in so many other crises like poverty, violence, substance abuse, homelessness, etc. We need deeper analyses to see how they are all connected. #macrosw



Nancy Kusmaul, PhD, MSW @nancy_kusmaul

43 minutes ago

RT @llpyles: @DorlisaMinnick @adriennecgarr @ShipCLUS We should be on the front lines of many sustainability issues. However, our meager re...



Destiny Cardoso @Destiny39985027

43 minutes ago

@AlyssaLotmore A3: The local, state, and federal government are key actors in disaster recovery. Although, primarily the local government is responsible in taking immediate action. However, if further help is needed they can lean on the state and then federal government. #MacroSW



Adrienne Garr @adriennecgarr

42 minutes ago

@llpyles @DorlisaMinnick @ShipCLUS Agreed! #MacroSW



Nancy Kusmaul, PhD, MSW @nancy_kusmaul

41 minutes ago

RT @Destiny39985027: @AlyssaLotmore A3: The local, state, and federal government are key actors in disaster recovery. Although, primarily t...



#MacroSW Moderator @OfficialMacroSW

41 minutes ago

RT @llpyles: @DorlisaMinnick @adriennecgarr @ShipCLUS We should be on the front lines of many sustainability issues. However, our meager re...



Alyssa Lotmore @AlyssaLotmore

41 minutes ago

@OfficialMacroSW and @llpyles... seeing some great resources and content being shared tonight! Awesome discussion! #MacroSW



Anna @anna_ambrussuny

41 minutes ago

RT @UBittic: A3: This community worked collaboratively in a trauma-informed way to respond to a disaster, mitigate its impacts, and to show...



Nancy Kusmaul, PhD, MSW @nancy_kusmaul

40 minutes ago

@Destiny39985027 @AlyssaLotmore A3: Agree. The local responders are the first and last responders- they're the ones who are still there when the federal and state help leaves, and the social service system may not have the capacity to address all needs. #macrosw



DeaconFATAL @fullofbass

39 minutes ago

RT @VilissaThompson: Good evening, y'all! #MacroSW partner here, eager to see the discussion of tonight's chat. I hope everyone is sett...



Dorlisa Minnick @DorlisaMinnick

39 minutes ago

THIS 🖱️

OscarRivera @OscarLCSW

39 minutes ago



Every Emergency Response System should have an experienced social worker in their team who understands the community and their needs. Social workers should be taking the lead with the logistics efforts of the recovery process #MacroSW

Dorlisa Minnick @DorlisaMinnick

39 minutes ago



RT @adriennecgarr: @AlyssaLotmore @UBittic Policies should be created so that 1st responders have a safe space to process the trauma they a...

Alyssa Lotmore @AlyssaLotmore

39 minutes ago



Q4: What are the barriers to equitable disaster recovery? #MacroSW
<https://t.co/0LGwcMU42I>

#MacroSW Moderator @OfficialMacroSW

38 minutes ago



RT @AlyssaLotmore: Q4: What are the barriers to equitable disaster recovery? #MacroSW <https://t.co/0LGwcMU42I>

starr howell @starrjaneee

38 minutes ago



Hi my name is Starr Howell and i am a senior at SUNY Oneonta #MacroSW

Adrienne Garr @adriennecgarr

38 minutes ago



RT @OscarLCSW: Every Emergency Response System should have an experienced social worker in their team who understands the community and the...

Loretta Pyles @llpyles

38 minutes ago



@AlyssaLotmore Scholars and journalists such as @NaomiAKlein have talked about disaster capitalism, noting the ways that big corporations capitalize on disaster by seeking out contracts for re-development and governments use disaster as an opportunity to privatize public services. #MacroSW

ITTIC @UBittic

38 minutes ago



A3: Social workers are naturally key actors in disaster recovery. By bringing a trauma-informed approach to the work, they can help to set a safe, collaborative dynamic for recovery and rebuilding <https://t.co/LQFvm4MUgP> #MacroSW

Adrienne Garr @adriennecgarr

38 minutes ago



the first and last responders!

Destiny Cardoso @Destiny39985027

37 minutes ago



@adriennecgarr @AlyssaLotmore Yes, first responders are crucial within disasters. Although, I may add that non-profits and organizations that take action in disaster events are also essential, such as the Red Cross, Convey of Hope and Direct Relief. #MacroSW

Nancy Kusmaul, PhD, MSW @nancy_kusmaul

37 minutes ago



RT @Destiny39985027: @adriennecgarr @AlyssaLotmore Yes, first responders are crucial within disasters. Although, I may add that non-profits...

Loretta Pyles @llpyles

37 minutes ago



@AlyssaLotmore Many people don't realize that it is the disaster victims themselves who end up being first responders – rescuing neighbors from rising waters, pulling them out of rubble, sharing food/water/shelter. #MacroSW

#MacroSW Moderator @OfficialMacroSW

36 minutes ago



@starrjaneee Welcome #MacroSW

Loretta Pyles @llpyles

36 minutes ago



@AlyssaLotmore Groups like @MutualAidRelief teach grassroots humanitarian aid and abide by principles of solidarity not charity. #MacroSW

#MacroSW Moderator @OfficialMacroSW

36 minutes ago



RT @llpyles: @AlyssaLotmore Scholars and journalists such as @NaomiAKlein have talked about disaster capitalism, noting the ways that big c...

Loretta Pyles @llpyles

36 minutes ago



@AlyssaLotmore While social workers have played important mental health and coordination roles in disaster recovery, their skills are still underutilized and they could be bringing their community engagement skills into the mix more proactively. #MacroSW

starr howell @starrjaneee

35 minutes ago



A2: The people who are most vulnerable in disasters are the elderly, children, and people of low socio-economic statuses. They lack the resources needed to fully recover from the damages of these natural disasters and are less likely to be able to help themselves. #MacroSW



ITTIC @UBittic

35 minutes ago

A4: The trauma-informed principle of empowerment helps to build a community's capacity for effective, equitable recovery. Without a sense of pre-disaster empowerment, inequitable recovery is unfortunately likely
<https://t.co/XVHKP0s0Le> #MacroSW



Nancy Kusmaul, PhD, MSW @nancy_kusmaul

35 minutes ago

RT @starrjaneeee: A2: The people who are most vulnerable in disasters are the elderly, children, and people of low socio-economic statuses...



Loretta Pyles @llpyles

35 minutes ago

@OscarLCSW @AlyssaLotmore @NaomiAKlein <https://t.co/TPW36liqZ8> #macrosw



Nancy Kusmaul, PhD, MSW @nancy_kusmaul

35 minutes ago

RT @llpyles: @AlyssaLotmore Many people don't realize that it is the disaster victims themselves who end up being first responders – rescui...



Adrienne Garr @adrienne Garr

34 minutes ago

@AlyssaLotmore A4. Most times recovery efforts are an opportunity for developers. Instead of equitable development developers and other outside actors are allowed to parce out disaster zones and develop what they want based on the return they might get 😞 #MacroSW



Adrienne Garr @adrienne Garr

34 minutes ago

RT @UBittic: A4: The trauma-informed principle of empowerment helps to build a community's capacity for effective, equitable recovery. With...



Loretta Pyles @llpyles

34 minutes ago

@AlyssaLotmore While the phrase "build back better" has been used by many stakeholders, we have to ask who gets to define what better means? And whose interests are being served? #MacroSW #disastercapitalism



Jonathan Singer @socworkpodcast

33 minutes ago

The 2018 NASW Code of Ethics has 19 changes, most related to #SWTech. Allan Barsky and I talk about 7 of them. Listen to PART 1: <https://t.co/UtpyEzk0TF> PART 2: <https://t.co/xsP5Um0TAR> #socialwork Part 3: <https://t.co/OE7SL6HumP> #MacroSW

Nancy Kusmaul, PhD, MSW @nancy_kusmaul

33 minutes ago



@llpyles @AlyssaLotmore My colleagues and I have talked about this. And the importance of neighbors in disaster planning with older adults. In things like fires they may be the only ones to help, when outsiders cannot access the neighborhoods. #macrosw

Loretta Pyles @llpyles

33 minutes ago



@AlyssaLotmore In an era where we see the retrenchment of public services and austerity, civil society is often forced to pick up all the slack of government failures in mitigation, relief and recovery. <https://t.co/Qw8B9bZLqI> #MacroSW

#MacroSW Moderator @OfficialMacroSW

33 minutes ago



RT @llpyles: @AlyssaLotmore While the phrase "build back better" has been used by many stakeholders, we have to ask who gets to define what...

Nancy Kusmaul, PhD, MSW @nancy_kusmaul

33 minutes ago



#macrosw How Natural Disasters Can Spur Gentrification
<https://t.co/HojQgUFMMx>

Nancy Kusmaul, PhD, MSW @nancy_kusmaul

32 minutes ago



RT @llpyles: @AlyssaLotmore In an era where we see the retrenchment of public services and austerity, civil society is often forced to pick...

#MacroSW Moderator @OfficialMacroSW

31 minutes ago



RT @nancy_kusmaul: #macrosw How Natural Disasters Can Spur Gentrification
<https://t.co/HojQgUFMMx>

Alyssa Lotmore @AlyssaLotmore

31 minutes ago



Last question for the night... Q5: What can social workers do to mitigate disasters before they happen? #MacroSW <https://t.co/H6kxljXLba>

Loretta Pyles @llpyles

31 minutes ago



@Destiny39985027 @AlyssaLotmore @NaomiAKlein Milton Friedman, the conservative economist, wrote that capitalism needs crises like disasters and wars to flourish. It's my opinion that it's built into the system of trying to keep the economy growing endlessly #disastercapitalism #macrosw

#MacroSW Moderator @OfficialMacroSW

31 minutes ago



RT @AlyssaLotmore: Last question for the night... Q5: What can social workers do to mitigate disasters before they happen? #MacroSW <https://t.co/H6kxljXLba>



Celena Allen @Celena_M_Allen

30 minutes ago

RT @llpyles: @AlyssaLotmore Low-income people are the most vulnerable to disasters because they do not have resources to prepare, mitigate,...



#MacroSW Moderator @OfficialMacroSW

30 minutes ago

RT @llpyles: @Destiny39985027 @AlyssaLotmore @NaomiAKlein Milton Friedman, the conservative economist, wrote that capitalism needs crises l...



ITTIC @UBittic

29 minutes ago

A5: By working within communities in a trauma-informed, collaborative way, social workers can build social capital and strong community ties before disaster strikes, hopefully lessening the negative impacts <https://t.co/pQERTO8AQB> #MacroSW



Anna @anna_ambrussuny

28 minutes ago

RT @UBittic: A5: By working within communities in a trauma-informed, collaborative way, social workers can build social capital and strong...



Loretta Pyles @llpyles

28 minutes ago

@AlyssaLotmore Building community resilience and social capital will help people to advocate for better policies and to be more resilient. #MacroSW



Nancy Kusmaul, PhD, MSW @nancy_kusmaul

28 minutes ago

RT @UBittic: A5: By working within communities in a trauma-informed, collaborative way, social workers can build social capital and strong...



Nancy Kusmaul, PhD, MSW @nancy_kusmaul

27 minutes ago

RT @llpyles: @AlyssaLotmore Building community resilience and social capital will help people to advocate for better policies and to be mor...



Loretta Pyles @llpyles

27 minutes ago

@AlyssaLotmore Bolstering local food security through community food gardens and supporting local businesses can help to create a more sustainable local food system that will make communities more resilient in the face of climate collapse. #MacroSW #ClimateChange



ITTIC @UBittic

26 minutes ago

A5: Promoting trauma-informed principles such as safety, collaboration, and empowerment within communities prior to disaster will also allow social workers to help reduce negative impacts and promote more effective recovery <https://t.co/ktCzltOzKS> #MacroSW

Dorlisa Minnick @DorlisaMinnick

26 minutes ago



@llpyles @adriennecgarr Yes,the issues r tied together. 1 takeaway from research surveying county residents is importance of community mobilization to get represent8n across demographics & lived experience bc while residents argued against collecting demographics,it was their privilege 2 do so. #MacroSW



#MacroSW Moderator @OfficialMacroSW

25 minutes ago

RT @llpyles: @AlyssaLotmore Bolstering local food security through community food gardens and supporting local businesses can help to creat...



Dr. Beth Walker @bwalker123

24 minutes ago

This is so true. I used to have an Associate VP who told students they could do almost anything but open heart surgery with an MSW. And she was married to a Criminal Justice prof!



Sean Erreger, LCSW @StuckonSW

24 minutes ago

RT @llpyles: @AlyssaLotmore Anxiety about climate change & grief about the earth's devastation are some unexplored areas that communities m...



Oscar Rivera @OscarLCSW

24 minutes ago

As we are the experts on systems, know the community leaders and activists who have a great understanding of the community and work and collaborate directly with them to make disaster plans. #MacroSW



Adrienne Garr @adriennecgarr

24 minutes ago

@llpyles @AlyssaLotmore A5. For sure. SWs assisting in capacity building and building civically engaged communities will go a long way in helping to mitigate the damages from natural disasters #MacroSW



Sean Erreger, LCSW @StuckonSW

23 minutes ago

RT @UBittic: A5: By working within communities in a trauma-informed, collaborative way, social workers can build social capital and strong...



Loretta Pyles @llpyles

23 minutes ago

@UBittic Great resource #macrosw



Nancy Kusmaul, PhD, MSW @nancy_kusmaul

23 minutes ago

A5: By building community networks. Research has shown that just the process of meeting to plan for disasters builds community resilience because you know who the other players are in times of emergency. #MacroSW



Destiny Cardoso @Destiny39985027

23 minutes ago

@adriennecgarr @AlyssaLotmore I recall reading an article presented in a class on how the homes of Hurricane Katrina survivors were being bought by investors. #MacroSW <https://t.co/ebrM0FhrCZ>



Nancy Kusmaul, PhD, MSW @nancy_kusmaul

23 minutes ago

RT @adriennecgarr: @llpyles @AlyssaLotmore A5. For sure. SWs assisting in capacity building and building civically engaged communities will...



Nancy Kusmaul, PhD, MSW @nancy_kusmaul

23 minutes ago

RT @OscarLCSW: As we are the experts on systems, know the community leaders and activists who have a great understanding of the community a...



Loretta Pyles @llpyles

22 minutes ago

@AlyssaLotmore Helping the most vulnerable people in a community to develop disaster preparedness plans can alleviate impacts of a disaster such as a flood, hurricane, snowstorm, or earthquake. FEMA offers some tips for disaster preparedness. <https://t.co/YykCOSIMbO> #MacroSW



Sean Erreger, LCSW @StuckonSW

22 minutes ago

RT @nancy_kusmaul: A5: By building community networks. Research has shown that just the process of meeting to plan for disasters builds co...



#MacroSW Moderator @OfficialMacroSW

22 minutes ago

RT @nancy_kusmaul: A5: By building community networks. Research has shown that just the process of meeting to plan for disasters builds co...



Nancy Kusmaul, PhD, MSW @nancy_kusmaul

22 minutes ago

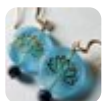
RT @llpyles: @AlyssaLotmore Helping the most vulnerable people in a community to develop disaster preparedness plans can alleviate impacts...



Adrienne Garr @adriennecgarr

21 minutes ago

RT @llpyles: @AlyssaLotmore Helping the most vulnerable people in a community to develop disaster preparedness plans can alleviate impacts...



Random Jeweler @randomjeweler

21 minutes ago

RT @nancy_kusmaul: A5: By building community networks. Research has shown that just the process of meeting to plan for disasters builds co...

Alyssa Lotmore @AlyssaLotmore

21 minutes ago



A great #MacroSW chat! As someone who is 50% Bahamian & has family in the Bahamas who have been severely impacted by this last hurricane, I truly do hope that as social workers we can have more of a role in prevention, mitigation and response for disasters. We're needed! #MacroSW

Anna @anna_ambrussuny

21 minutes ago



RT @nancy_kusmaul: A5: By building community networks. Research has shown that just the process of meeting to plan for disasters builds co...

 **Adrienne Garr**  @adriennecgarr

20 minutes ago



@Destiny39985027 @AlyssaLotmore This happens often..it's then labeled as "urban renewal" at some point #MacroSW

Loretta Pyles @llpyles

20 minutes ago



@AlyssaLotmore Sorry to hear about the losses your family experienced. It's really hard when you can't be there for them either. Thanks for your commitment to this issue and to #macrosw

Alyssa Lotmore @AlyssaLotmore

19 minutes ago



Thank you so much for joining this #MacroSW chat, and to @llpyles for being the guest expert this evening. A great dialogue about disasters, climate change and social work. #MacroSW <https://t.co/Zg7Yaz4cgt>

#MacroSW Moderator @OfficialMacroSW

19 minutes ago



You can help support the chat by becoming a patron on Pateron. Support us at <https://t.co/8Osl12SDIO> #MacroSW

 **Adrienne Garr**  @adriennecgarr

19 minutes ago



@AlyssaLotmore I hope all of your friends and relations in or near Abaco are ok. ❤️ Thank you for the chat. #MacroSW

Kayla Blotner @KayBlot

18 minutes ago



Thanks for another great chat. See everyone next week #macrosw

#MacroSW Moderator @OfficialMacroSW

18 minutes ago



You can also support these chats by retweeting the link <https://t.co/8Osl12SDIO> and inviting colleagues to join the chats. #MacroSW

Dorlisa Minnick @DorlisaMinnick

18 minutes ago



@llpyles @AlyssaLotmore I chair our Cumberland County Food System Alliance which @ShipCLUS has just become the backbone org to it. We use framework of food as human right and food insecurity is one of our pillars. We r also committed to food policy, & building a local alternative food system. #MacroSW

Nancy Kusmaul, PhD, MSW @nancy_kusmaul

17 minutes ago



@AlyssaLotmore @llpyles Thank you @AlyssaLotmore #macrosw
<https://t.co/seuEoH5Gsr>

Dorlisa Minnick @DorlisaMinnick

17 minutes ago



RT @AlyssaLotmore: A great #MacroSW chat! As someone who is 50% Bahamian & has family in the Bahamas who have been severely impacted by thi...

ITTIC @UBittic

17 minutes ago



Thank you all for the great conversation on this important topic-- looking forward to our next chat! #MacroSW

Dorlisa Minnick @DorlisaMinnick

16 minutes ago



RT @AlyssaLotmore: Thank you so much for joining this #MacroSW chat, and to @llpyles for being the guest expert this evening. A great dialo...

#MacroSW Moderator @OfficialMacroSW

15 minutes ago



Thank you @AlyssaLotmore @llpyles . The chat transcript will be ready and posted here and on the blog, <https://t.co/xDXgDLqamZ>, by tomorrow morning.
#MacroSW

Alyssa Lotmore @AlyssaLotmore

15 minutes ago



@adriennecgarr Thank you. They are on Grand Bahama, which was hit hard, but not as badly as Abaco. The dialogue and content shared tonight showed just how much social workers can bring to disaster situations and hopefully we can be more involved. #MacroSW

Anna @anna_ambrussuny

15 minutes ago



Thank you so much everyone for another enlightening chat! Looking forward to next week! #MacroSW

Loretta Pyles @llpyles

14 minutes ago



@AlyssaLotmore My pleasure. I wanted to share one final resource that I am really excited about and getting involved in. I hope folks have been following @ExtinctionR <https://t.co/NcKuqW2y0d> #macrosw

Destiny Cardoso @Destiny39985027

14 minutes ago



@AlyssaLotmore A5: I believe that collaboration between government and agencies in charge of disaster preparedness can result in a better action plan. Raising awareness for a disaster plan within the social workers community is a step toward preparedness. #MacroSW

Alyssa Lotmore @AlyssaLotmore

14 minutes ago



@llpyles Thank you. The dialogue and content shared tonight showed just how much social workers can bring to disaster situations and hopefully we can be more involved. Thanks for leading this tonight, Loretta, and bringing more attention to this topic! #MacroSW

Dorlisa Minnick @DorlisaMinnick

9 minutes ago



This is another reason social work engagement in county & municipal planning is crucial B4 disaster! We have to better understand zoning to use it 2 keep housing affordable, 2 attain green space but keep it smallish (@amykrings pub on size) 2 prevent gentrification. #macrosw

Dorlisa Minnick @DorlisaMinnick

4 minutes ago



@llpyles @AlyssaLotmore Thanks for sharing Loretta! Im following the account and hoping to join a local action. Perhaps a #MacroSW chat on non-violent civil disobedience is warranted?

Dorlisa Minnick @DorlisaMinnick

4 minutes ago



RT @llpyles: @AlyssaLotmore My pleasure. I wanted to share one final resource that I am really excited about and getting involved in. I hop...

Showing 1 to 193 of 193 entries

 #MacroSW content from Twitter.

Free Custom Analytics and Transcripts for #MacroSW

100,000 Tweets

Symplur has over 100,000 #MacroSW tweets going back to October 2015.

Get unrestricted access to all conversations with **Symplur Signals**.

